

STORMWATER TRAINING

1 Day-8:00am to 4:00pm

March 3 and April 14, 2021

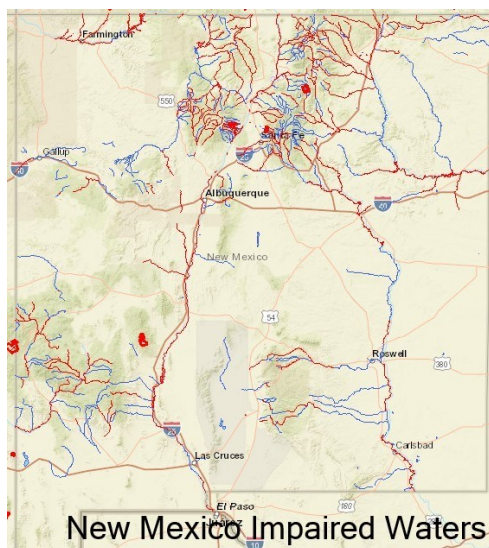
Instructor: Scott Olson, Altitude Training Associates, LLC

GUEST SPEAKER EPA REGION 6
MSGP COORDINATOR

**Q&A PANEL WITH LOCAL MUNICIPALITY STAFF
AND WATERSHED SPECIALISTS**



**Multi-Sector General Permit (MSGP 2021)
Stormwater Discharges from Industrial Activities
New Mexico & Surrounding Tribal Lands**



**MSGP Permit Effective March 1, 2021
Applications are Due May 30, 2021**

Oil & Gas Field Services (SIC 1389)
Scrap and Waste Recycling (SIC 5039)
Salvage Yards (SIC 5015)
Fabricated Metal Products (SIC 3411-3499)
Motor Freight Transportation Facilities (SIC 4212-4231)
Treatment Works ...and many more

**PRE-REGISTRATION AVAILABLE NOW AT
SCOTT@ALTITUDETA.COM**

Online registration coming soon at www.altitudeta.com

CLASS REQUIREMENTS INCLUDE A CAMERA AND MICROPHONE

SPONSORED BY:



Office: (505) 632-0615
info@envirotech-inc.com
5796 U.S. Highway 64
Farmington, NM 87401

List of Sectors Required to Obtain an MSGP

For compliance questions on the applicability of your facility activities please contact Envirotech at 505-632-0615

Sector A - Timber Products

Sector B - Paper and Allied Products

Sector C - Chemical and Allied Products Manufacturing, and Refining

Sector D - Asphalt Paving and Roofing Materials and Lubricant Manufacturing

Sector E - Glass, Clay, Cement, Concrete, and Gypsum Products

Sector F - Primary Metals

Sector G - Metal Mining

Sector H - Coal Mines and Coal Mining-Related Facilities

Sector I - Oil and Gas Extraction (SIC 1311, 1321, and 1381-1389)

Sector J - Non-Metallic Mineral Mining and Dressing

Sector K - Hazardous Waste Treatment, Storage, or Disposal Facilities

Sector L - Landfills, Land Application Sites, and Open Dumps

Sector M - Automobile Salvage Yards (SIC 5015 and 5093)

Sector N - Scrap Recycling and Waste Recycling Facilities

Sector O - Steam Electric Generating Facilities

Sector P - Land Transportation and Warehousing (SIC 4011, 4013, 4111-4173, 4212-4231, 4311, 5171)

Sector Q - Water Transportation

Sector R - Ship and Boat Building and Repair Yards

Sector S - Air Transportation (SIC 4512-4581)

Sector T - Treatment Works

Sector U - Food and Kindred Products

Sector V - Textile Mills, Apparel, and Other Fabric Products

Sector W - Furniture and Fixtures

Sector X - Printing and Publishing

Sector Y - Rubber, Miscellaneous Plastic Products, and Miscellaneous Manufacturing Industries

Sector Z - Leather Tanning and Finishing

Sector AA - Fabricated Metal Products (SIC 3411-3499 except 3479, 3911-3915, and 3479)

Sector AB - Transportation Equipment, Industrial or Commercial Machinery Facilities

Sector AC - Electronic and Electrical Equipment and Components, Photographic and Optical Goods

